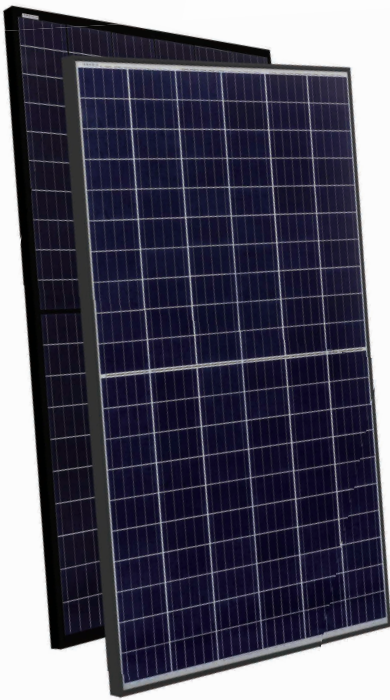
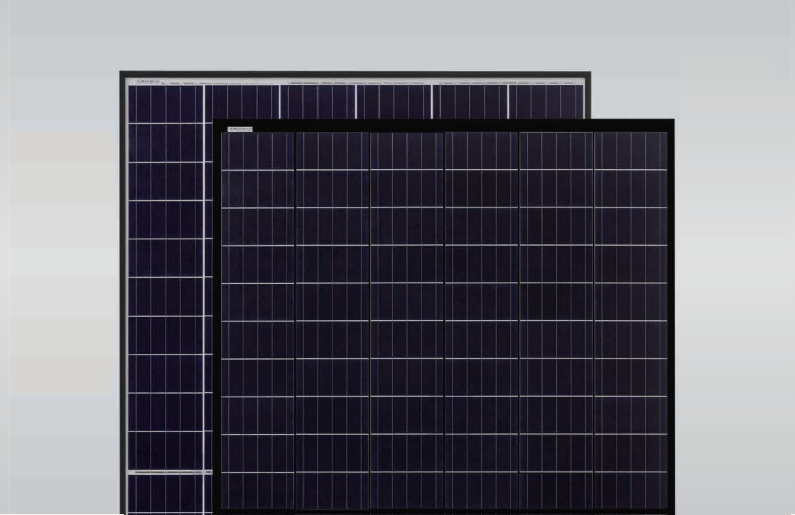


Eagle HC 60 265-285 Watt

POLY CRYSTALLINE MODULE

Positive power tolerance of 0~+3%



KEY FEATURES



Innovative Solar Cells

Five busbar Poly half cell technology



High Efficiency

Higher module conversion efficiency (up to 17.26%) due to lower resistance characteristics



PID-Free

World's 1st PID-Free module



Low-Light Performance

Advanced glass technology improves light absorption and retention



Strength and Durability

Certified for high snow (5400 Pa) and wind (2400 Pa) loads

- ISO9001:2008 Quality Standards
- ISO14001:2004 Environmental Standards
- OHSAS18001 Occupational Health & Safety Standards
- IEC61215, IEC61730 certified products

Nomenclature:

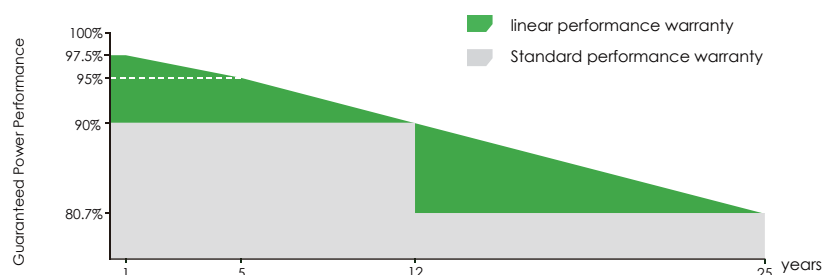
JKM285PP-60HB

Code	Cell	Code	Backsheet
null	Full	null	White
H	Half	B	Black

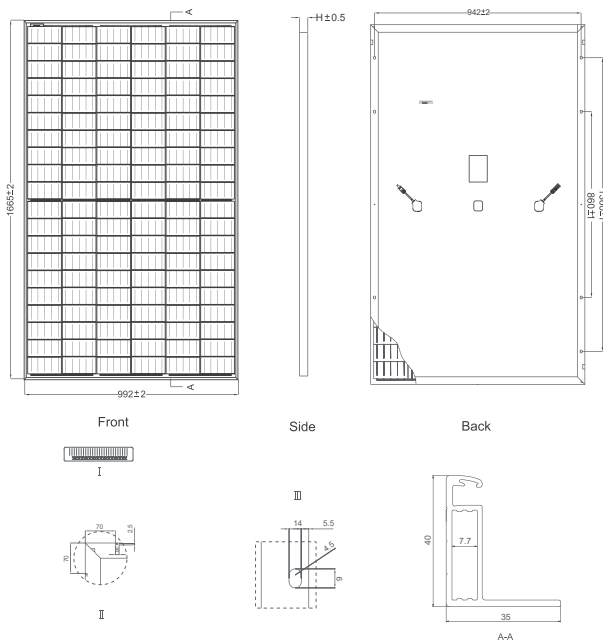


LINEAR PERFORMANCE WARRANTY

10 Year Product Warranty • 25 Year Linear Power Warranty



Engineering Drawings

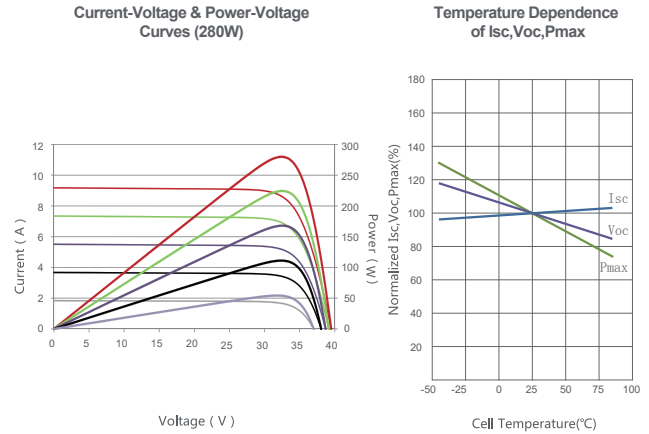


Packaging Configuration

(Two pallets =One stack)

26pcs/pallet , 52pcs/stack, 676 pcs/40'HQ Container

Electrical Performance & Temperature Dependence



Mechanical Characteristics

Cell Type	Poly-crystalline 156×156mm (6 inch)
No. of Half-cells	120 (12×10)
Dimensions	1665×992×40mm (65.55×39.05×1.57 inch)
Weight	19.0 kg (41.9 lbs)
Front Glass	3.2mm, Anti-Reflection Coating, High Transmission, Low Iron, Tempered Glass
Frame	Anodized Aluminium Alloy
Junction Box	IP67 Rated
Output Cables	anode 290mm, cathode 145mm

SPECIFICATIONS

Module Type	JKM265PP-60H		JKM270PP-60H		JKM275PP-60H		JKM280PP-60H		JKM285PP-60H	
	STC	NOCT	STC	NOCT	STC	NOCT	STC	NOCT	STC	NOCT
Maximum Power (Pmax)	265Wp	199Wp	270Wp	203Wp	275Wp	206Wp	280Wp	210Wp	285Wp	214Wp
Maximum Power Voltage (Vmp)	31.5V	28.8V	31.7V	29.1V	32.0V	29.4V	32.3V	29.8V	32.6V	30.1V
Maximum Power Current (Imp)	8.41A	6.90A	8.51A	6.96A	8.59A	6.99A	8.66A	7.06A	8.73A	7.12A
Open-circuit Voltage (Voc)	37.7V	35.3V	37.8V	35.6V	38.0V	35.9V	39.5V	36.2V	39.8V	36.5V
Short-circuit Current (Isc)	9.01A	7.19A	9.06A	7.23A	9.12A	7.27A	9.18A	7.31A	9.24A	7.35A
Module Efficiency STC (%)	16.04%		16.34%		16.65%		16.95%		17.26%	
Operating Temperature(°C)	-40°C~+85°C									
Maximum system voltage	1000VDC(UL)/1000VDC(IEC)									
Maximum series fuse rating	20A									
Power tolerance	0~+3%									
Temperature coefficients of Pmax	-0.38%/°C									
Temperature coefficients of Voc	-0.31%/°C									
Temperature coefficients of Isc	0.06%/°C									
Nominal operating cell temperature (NOCT)	45±2°C									

STC: Irradiance 1000W/m² Cell Temperature 25°C AM=1.5

NOCT: Irradiance 800W/m² Ambient Temperature 20°C AM=1.5 Wind Speed 1m/s

* Power measurement tolerance: ± 3%